

# Mississippi Rice Production

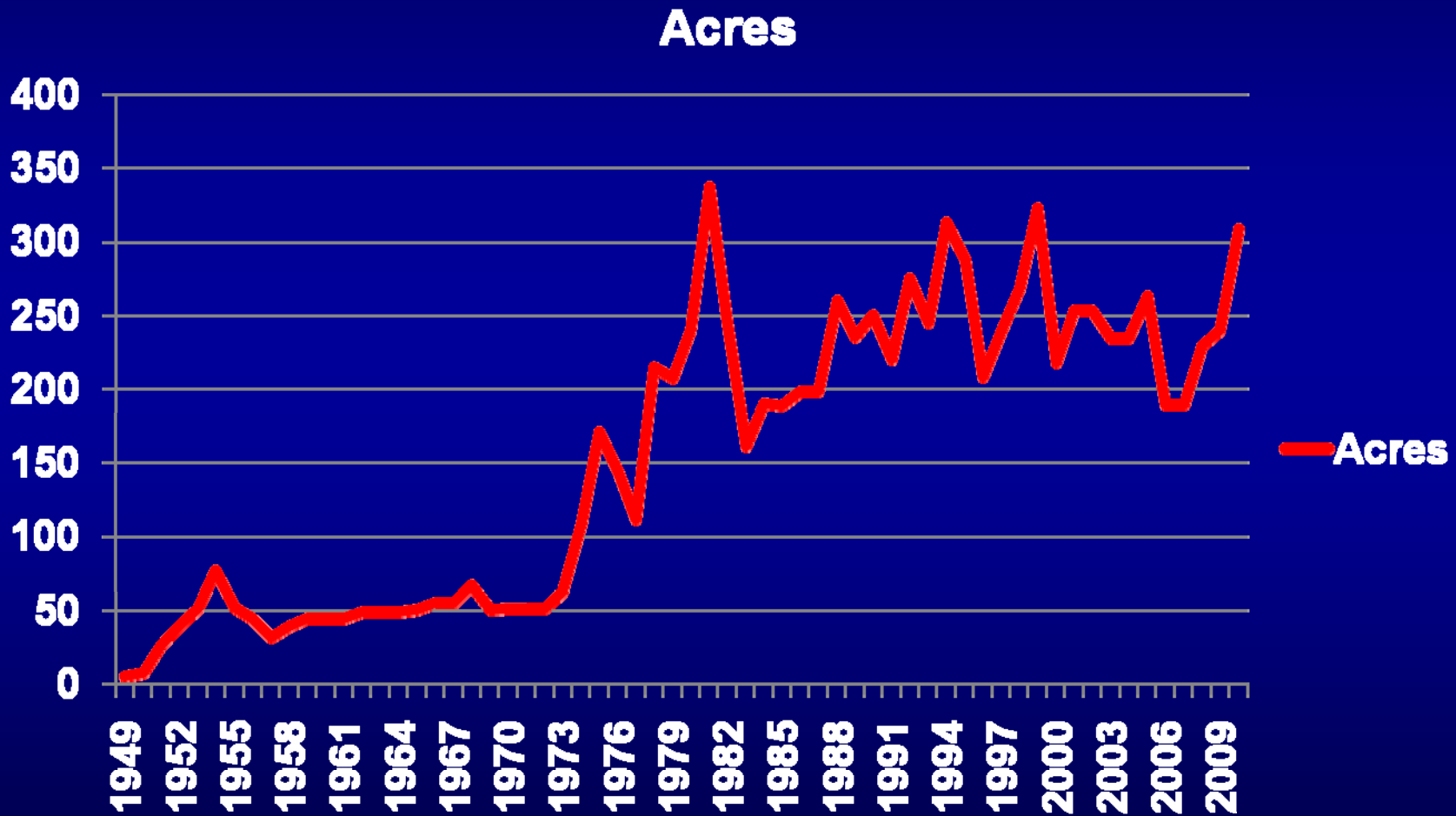


Nathan W. Buehring

# Long Grain Acres

	2009	2010
Arkansas	1,245,000	1,590,000
California	5,000	6,000
Louisiana	410,000	485,000
Mississippi	243,000	308,000
Missouri	197,000	248,000
Texas	165,000	184,000
Total	2,265,000	2,821,000

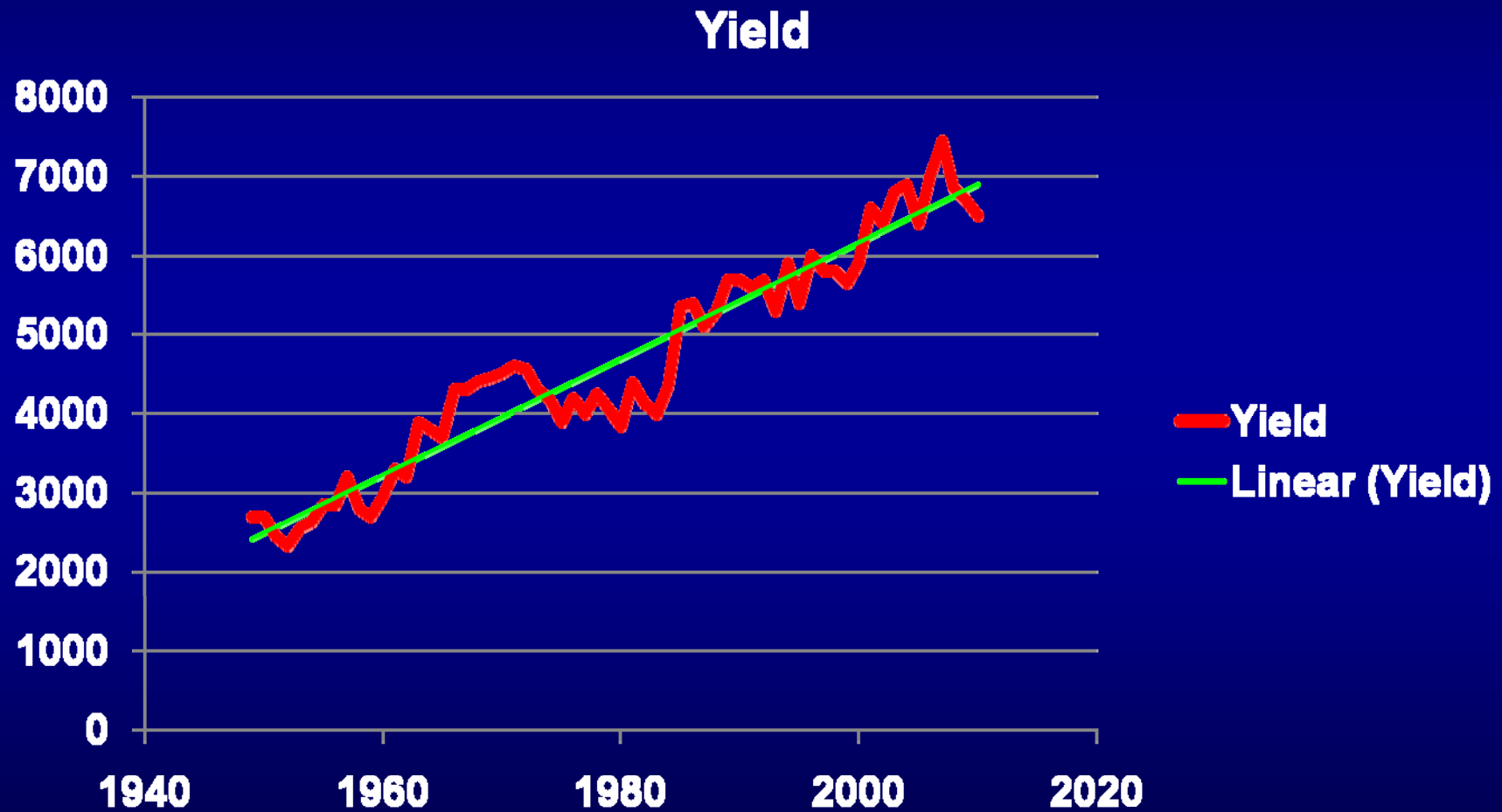
# Mississippi Rice Acres



# Long Grain Yields

	2009	2010
Arkansas	6,760	6,300
California	6,600	6,100
Louisiana	6,320	6,500
Mississippi	6,700	6,500
Missouri	6,710	6,300
Texas	7,770	7,100
Average	6,743	6,669

# Mississippi Rice Yields

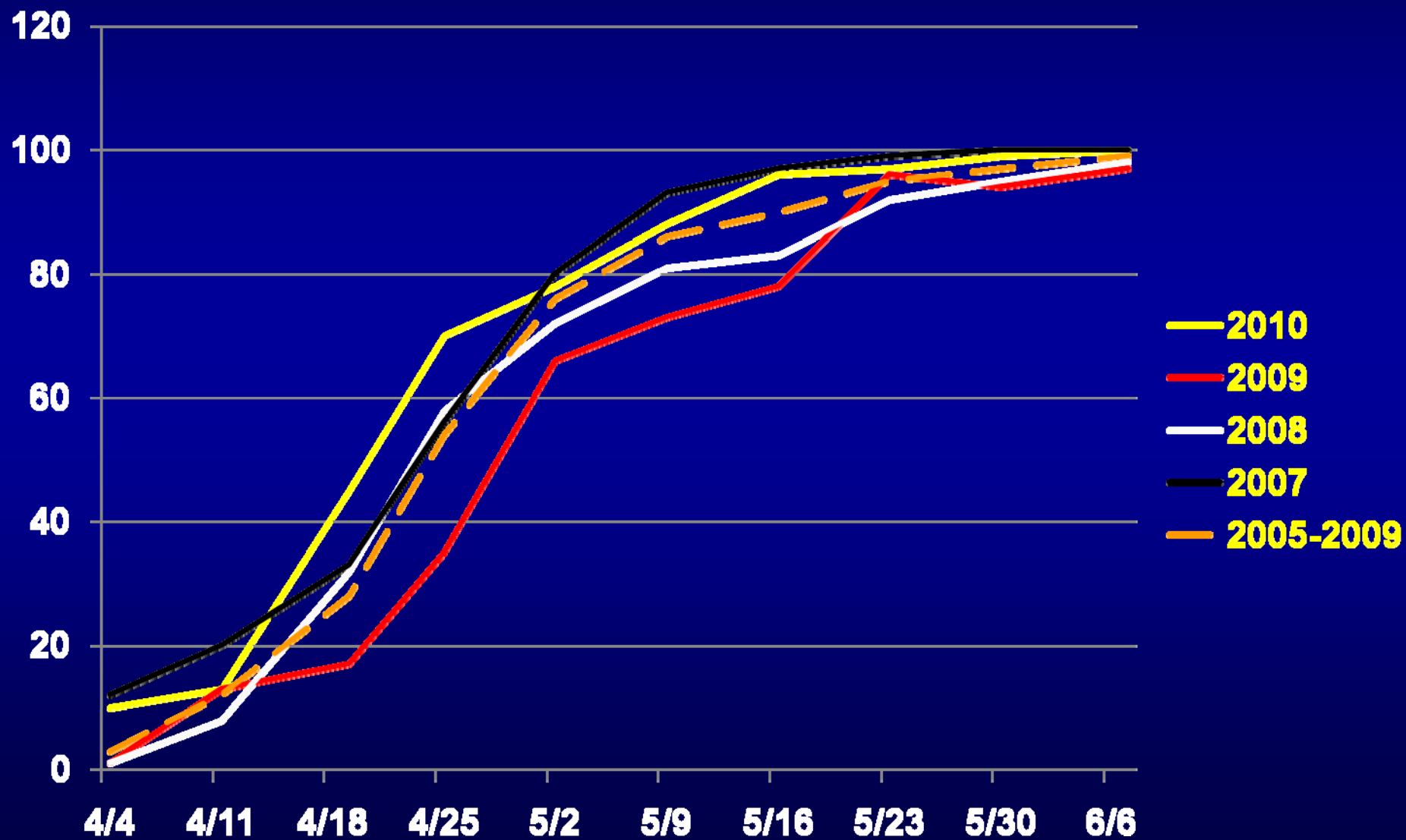


# Almost the Perfect Season



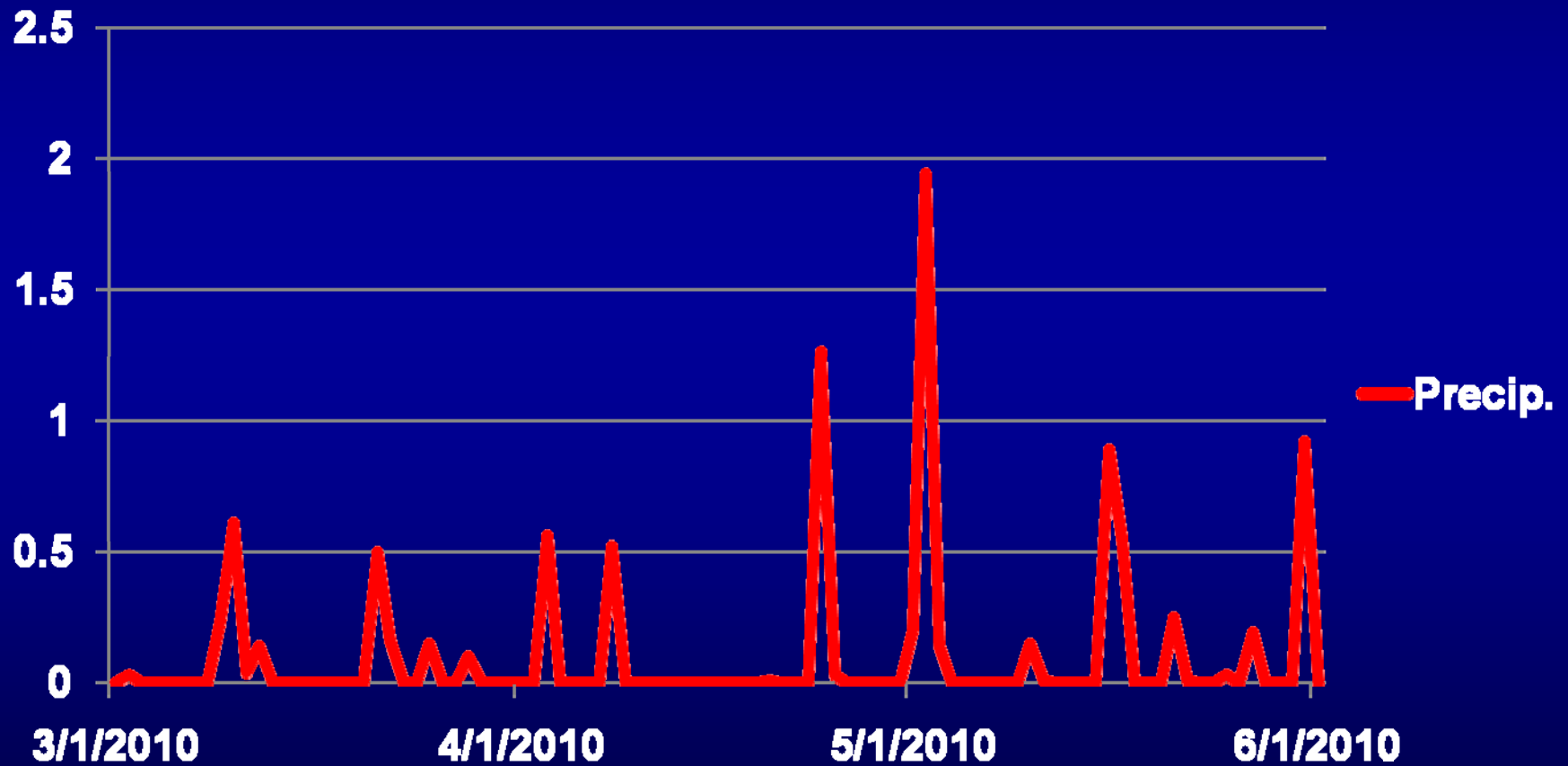
- Dry spring allowed for needed prep work
- Planting occurred at rapid pace
- Adequate rainfall early
- These conditions set the table for good yields

# 2010 Planting Progress



# Early Season Rainfall

Stoneville, MS





**Was it heat?**

**Or**

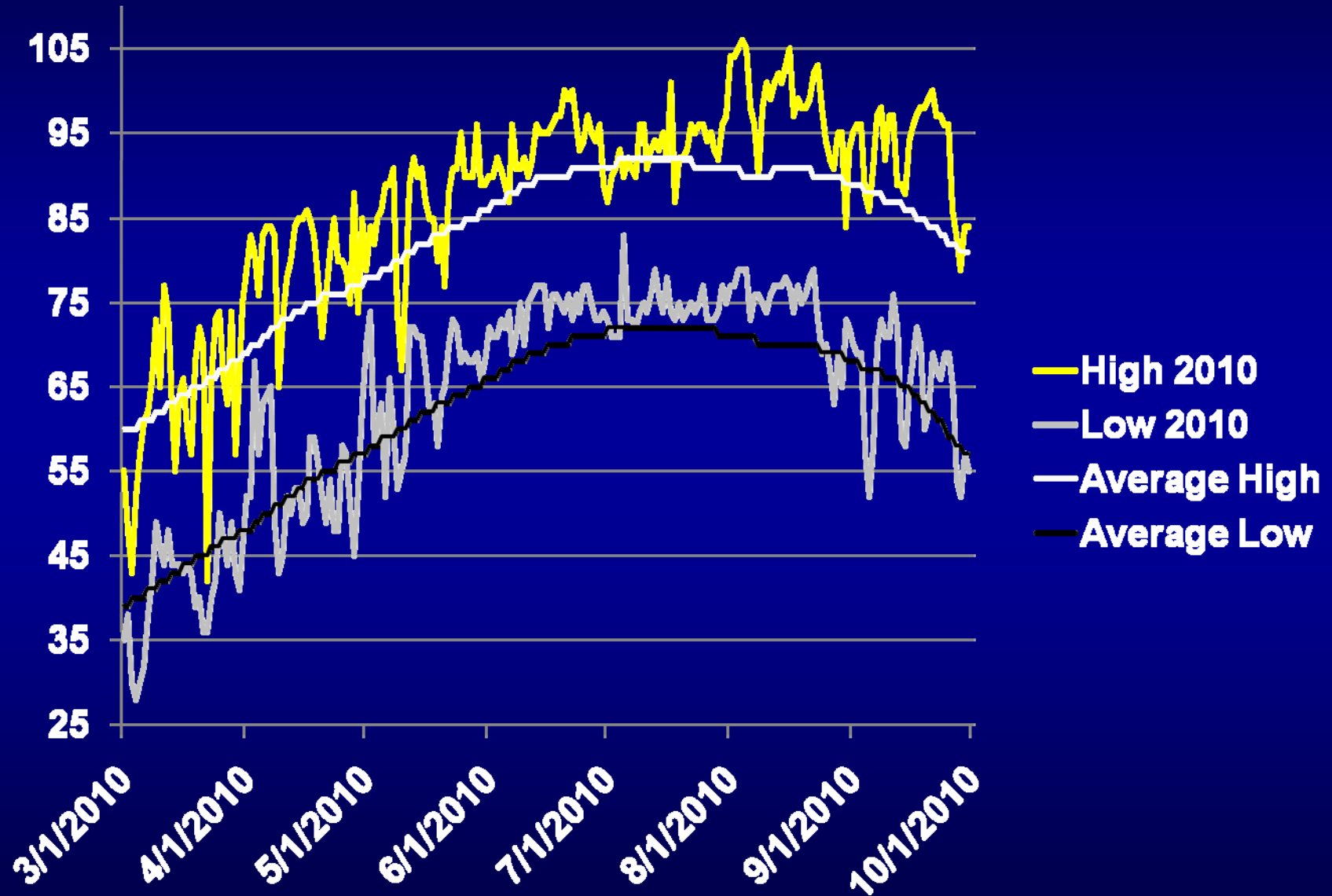
**Bacterial Panicle Blight?**



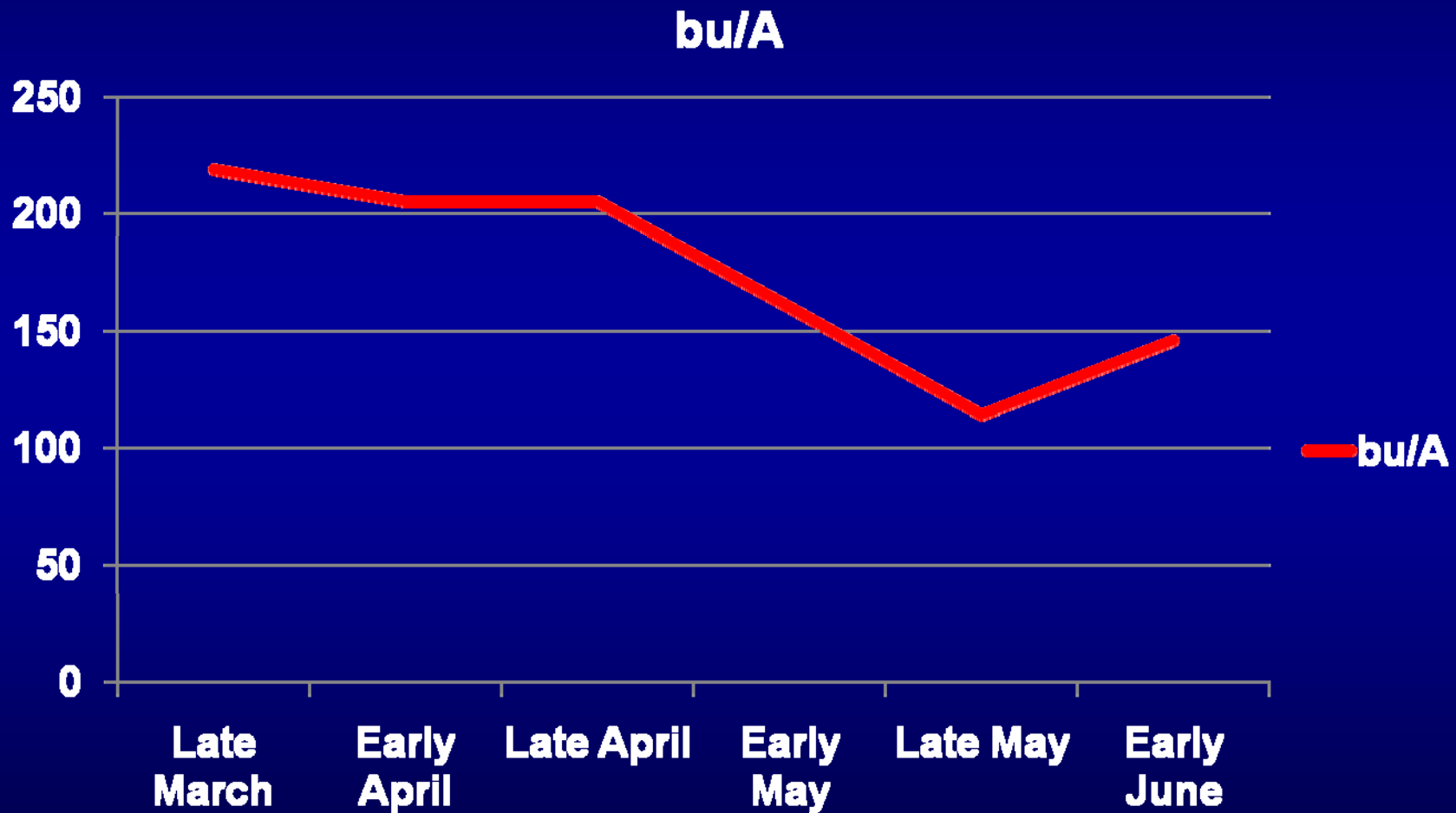




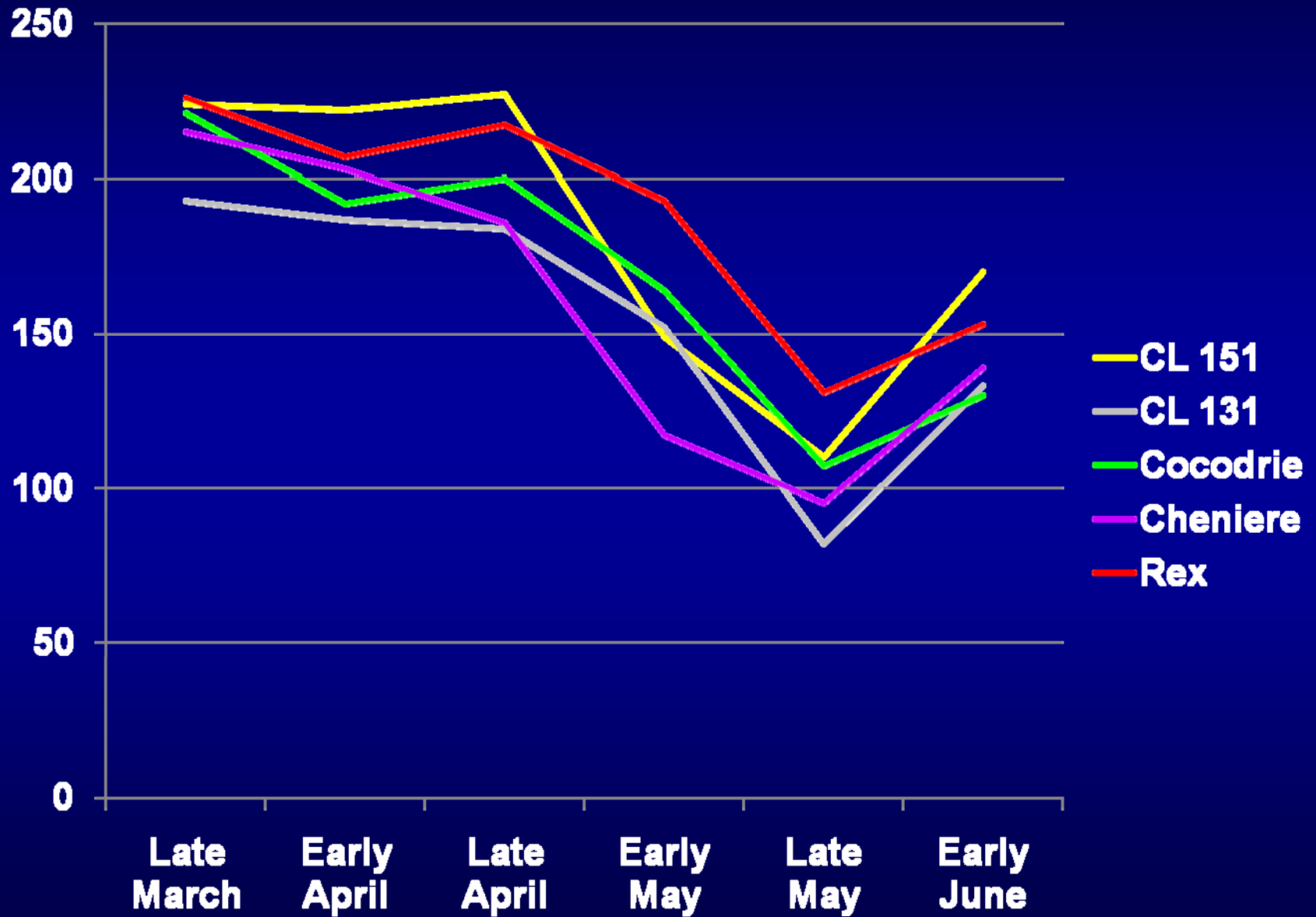
# Stoneville Temperatures



# Rice Yields by Planting Date



# Rice Yields by Planting Date



# **Clearfield Vs. Conventional Varieties**

## **Economics**



# Assumptions



## Variable Cost:

- Seed
- Herbicides
- Harvesting
- Hauling
- Drying



# Seed Price

## Variety

	<b>Average</b>	<b>Seed/A</b>	<b>lb/A</b>	<b>\$/lb</b>	<b>\$/A</b>
Rex	17191	1306800	76	0.36	27
Cocodrie	19892	1306800	66	0.36	24
Cheniere	21446	1306800	61	0.36	22
CL 131	20795	1306800	63	0.89	56
CL 151	20113	1306800	65	0.89	58
CL 111	17974	1306800	73	0.89	65
CL 162	17790	1306800	73	0.89	65

# Herbicide Program

## Conventional Varieties

~\$82/A

Command	Preemergence	1.33 pts/A
Riceshot	2- to 3-Leaf	4 qts/A
Facet	2- to 3-Leaf	0.4 lbs/A
Permit	2- to 3-Leaf	0.5 oz/A

## Clearfield Varieties

~ \$75/A

Command	Preemergence	1.33 pts/A
Newpath	Spiking to 1-Leaf	4 fl oz/A
Newpath	Preflood	4 fl oz/A
Aim	Preflood	1 fl oz/A

# Others

## Harvesting Cost

Variety	\$/A
Rex	\$47.82
Cocodrie	\$47.82
Cheniere	\$47.82
CL 131	\$47.82
CL 151	\$63.60
CL 111	\$47.82
CL 162	\$47.82

**Hauling** \$0.25/bu

**Drying** \$0.40/bu

**Milling (Premium/Cost)** 55/70

# Rice Yields, Cost and Returns

\$6.00/bu

Variety	Bu/A	Cost/Acre	100% Plot	75% Plot
Rex	214	\$670.36	\$637	\$310
Cocodrie	205	\$660.47	\$611	\$293
Cheniere	200	\$655.34	\$596	\$283
CL 131	179	\$668.68	\$467	\$183
CL 151	213	\$710.91	\$584	\$260
CL 111*	217	\$703.33	\$678	\$333
CL 162	203	\$694.59	\$567	\$252

# 2011 Rice Acres

**Acres will be lower**

**Other commodity prices higher**

**Rice prices have remained  
lower**



**BILOXI, MS**



**USA RICE  
OUTLOOK  
CONFERENCE**

**DECEMBER 8-10, 2010**